

# *Are Races Like Constellations?*

\* Rasmus Grønfeldt Winther

\* [www.rgwinther.com](http://www.rgwinther.com) ; [rgw@ucsc.edu](mailto:rgw@ucsc.edu)

\* Department of Philosophy,  
University of California, Santa Cruz

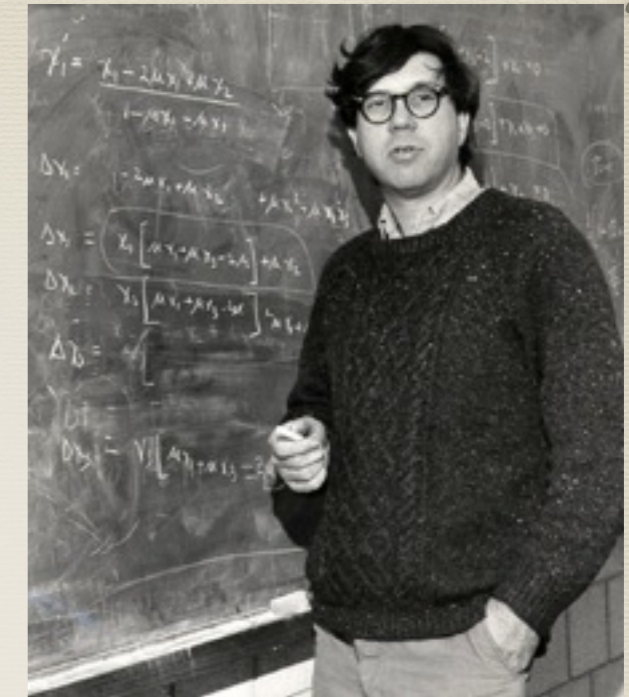
\* April 12-13, 2013; UCSC; Public Conference “Genomics  
and Philosophy of Race” Research Cluster

\* #GenoPhiloRace



# “Apportionment of Human Diversity”

Gene	Alleles	Caucasoid	Negroid	Mongoloid
<i>Duffy</i>	Fy	0.03	0.94	0.1
	Fya	0.42	0.06	0.9
	Fyb	0.56	---	---
<i>Auberger</i>	Aua	0.62	0.64	
	Au	0.38	0.36	
<i>Xg</i>	Xga	0.67	0.55	
	Xg	0.33	0.45	



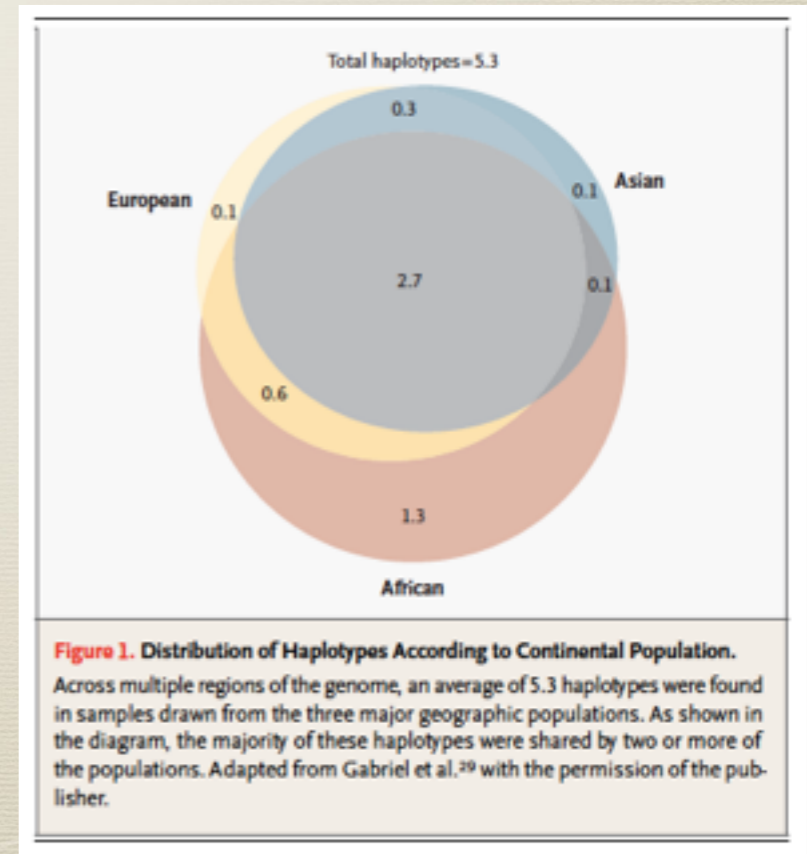
Richard Lewontin

Lewontin 1972

**“Races” don’t exist, genetically**  
 85% of Human Genetic Variation (HGV) is among individuals within populations

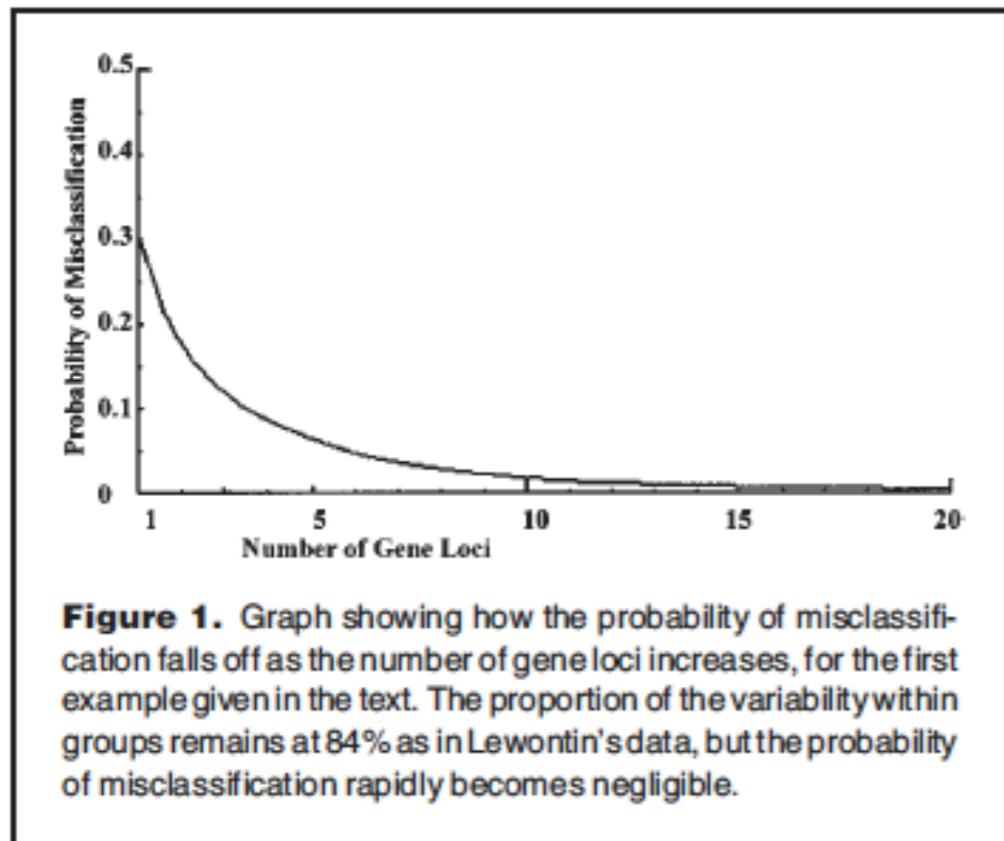
10% of HGV is among populations within “races” (continental regions)

5% of HGV is among “races”



Cooper 2003

# “Lewontin’s Fallacy”?



Edwards 2003



Italy, 1963: standing—Luca and Alba Cavalli-Sforza and three of their children; seated—Hiroko Kimura, Anthony Edwards, Akio Kimura, and Thomas, Catharina, and Ann Edwards. Photograph by Motoo Kimura; reproduced by courtesy of Hiroko Kimura.

- \* Each additional locus provides classificatory information
- \* Especially true for loci with significant gene frequency differences across populations/groups/clusters

# Concepts of “race”

	Lewontin	Edwards
Bio-genomic race	?	Yes
Biological race	No	?
Social race	? (Post-racial)	?

# Stage-Setting

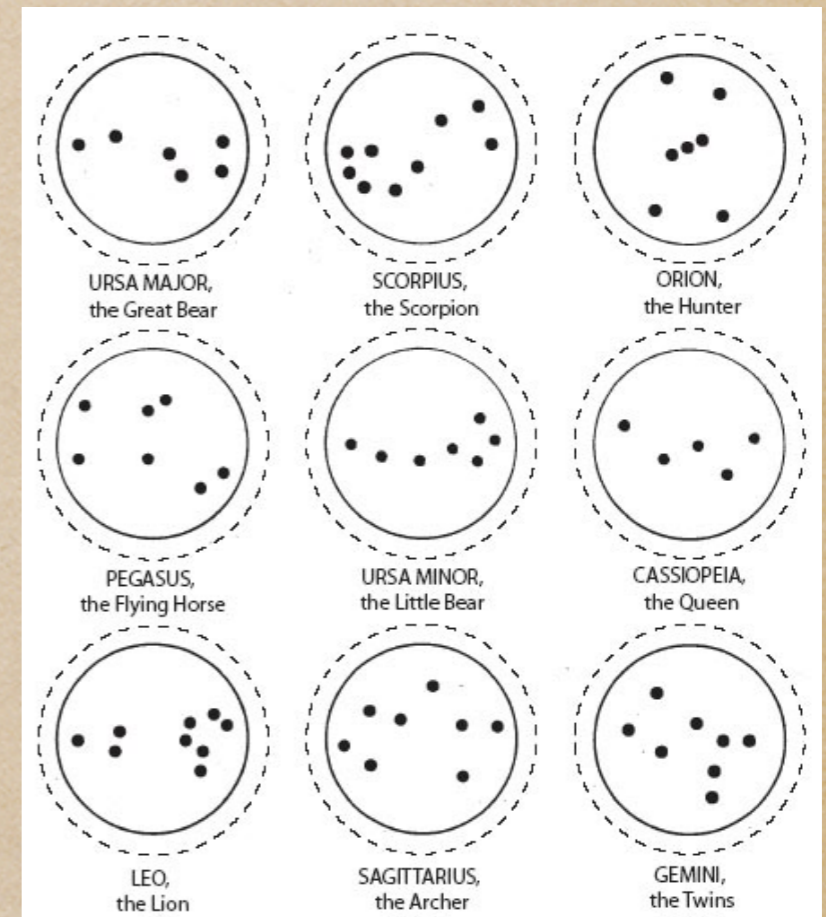
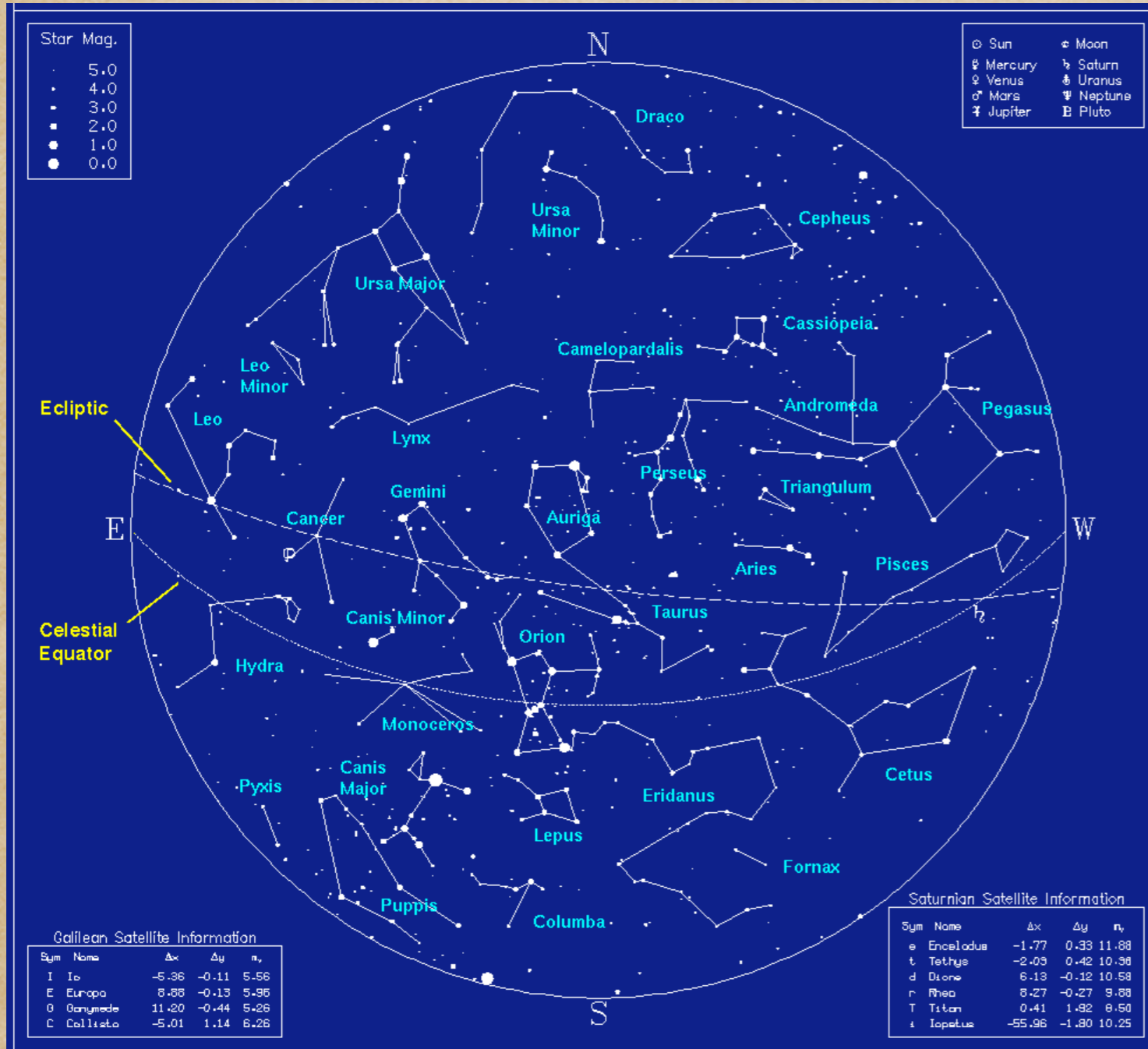
“Human racial classification is of no social value and is positively destructive of social and human relations.”

(Lewontin 1972 397)

“But it is a dangerous mistake to premise the moral equality of human beings on biological similarity, because dissimilarity, once revealed, then becomes an argument for moral inequality.”

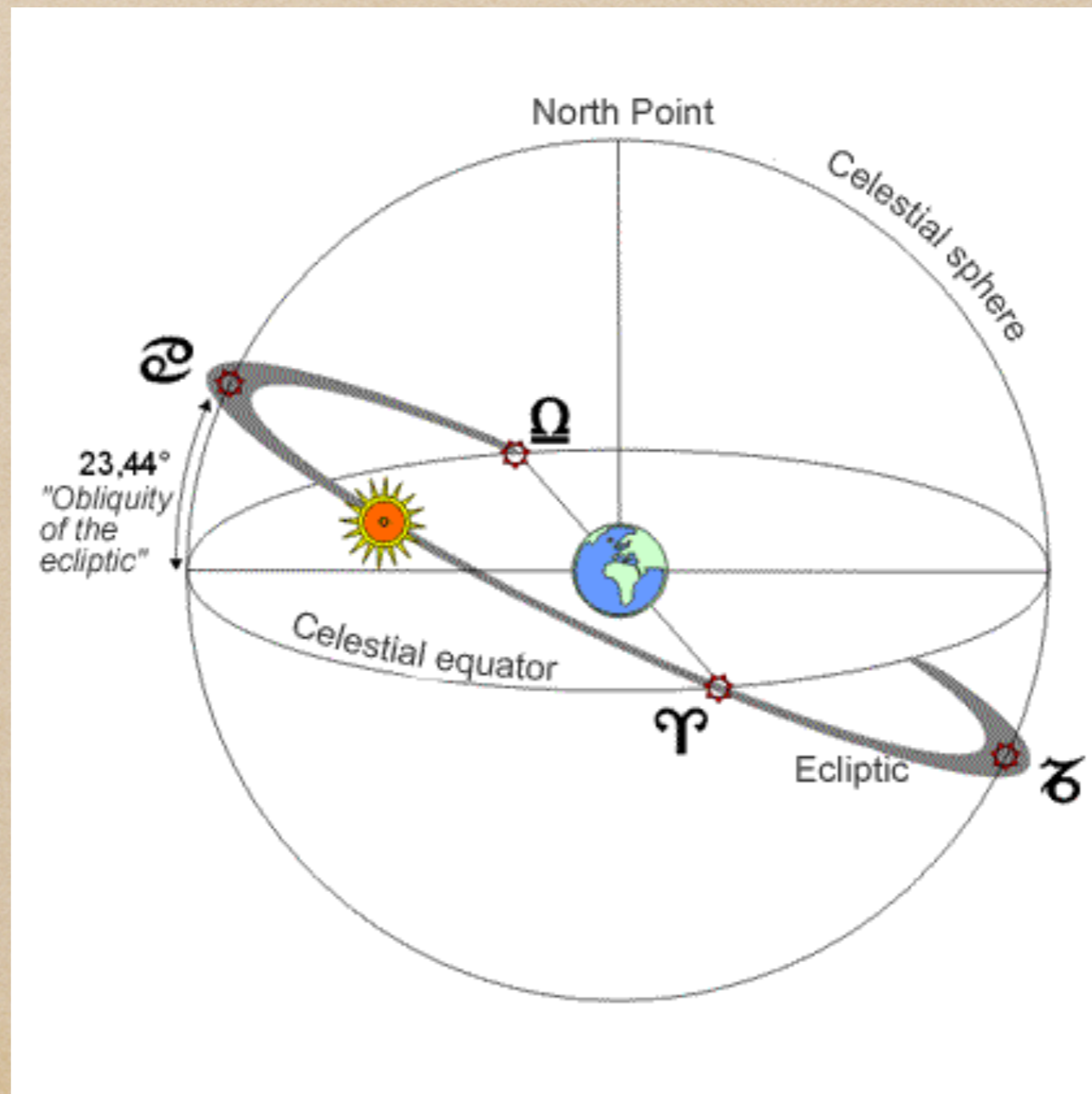
(Edwards 2003 801)

# Constellations I





# Methodological Pluralism

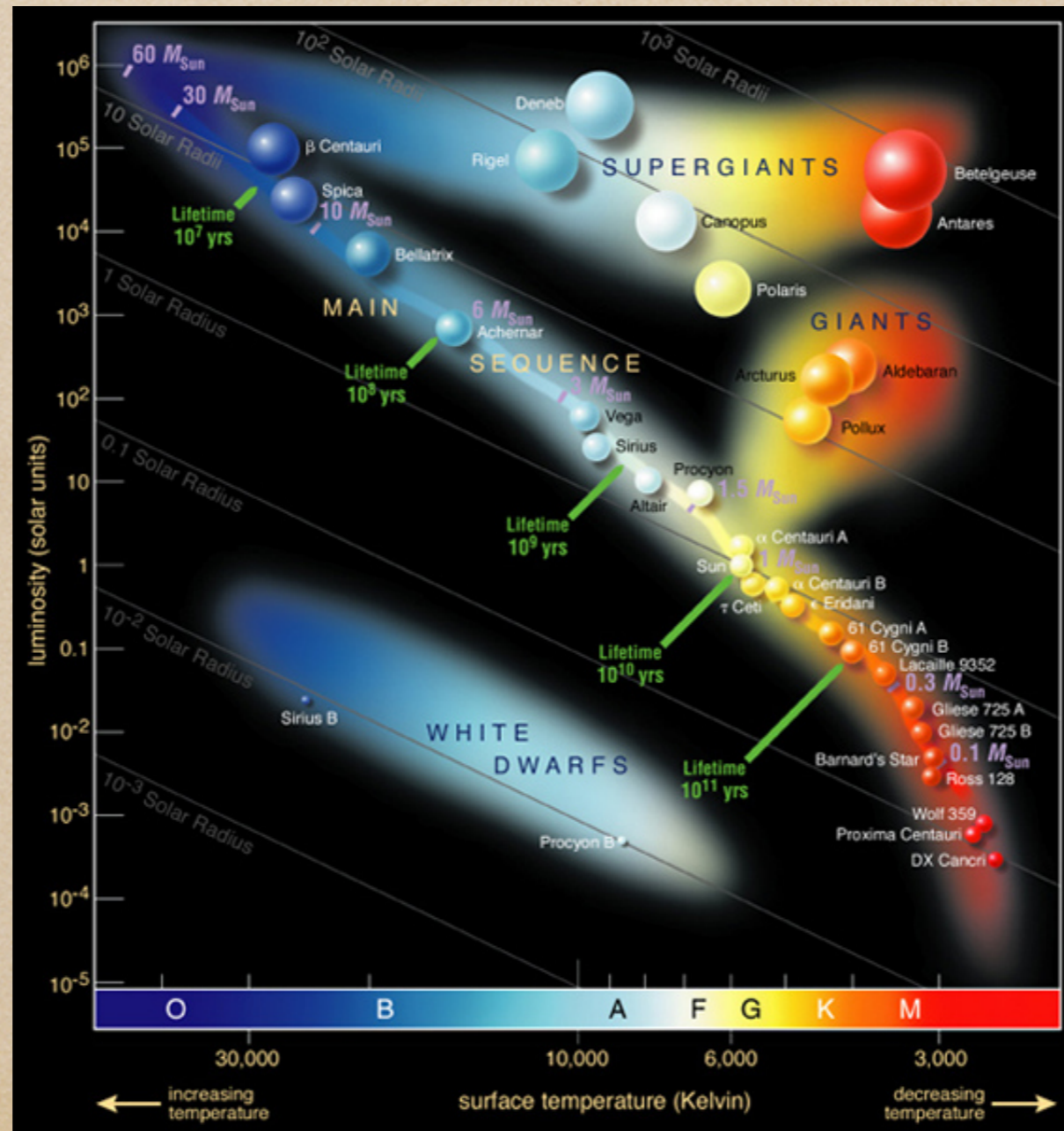


\* Objective frame

\* Babylonian/  
Greek vs.  
Chinese



# Alternative Classification



\* Hertzsprung-Russell Diagram

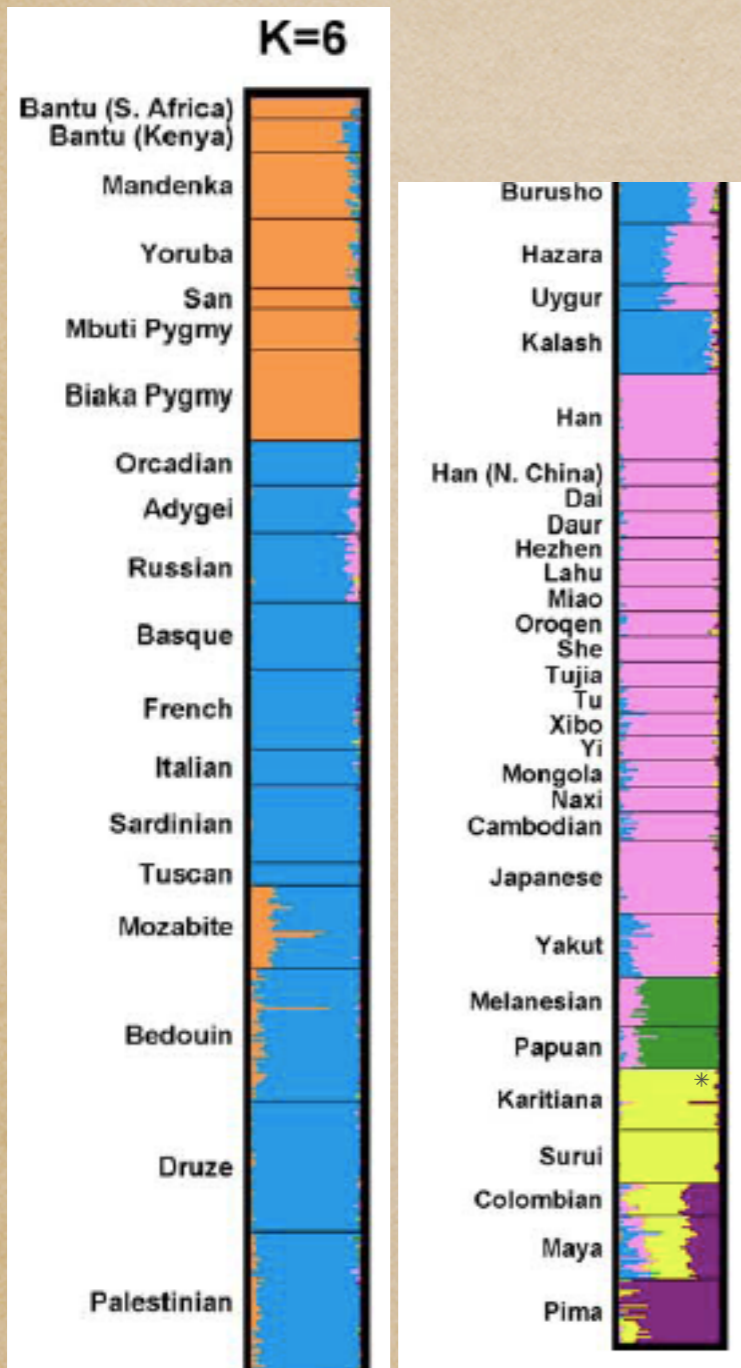
# Constellation-Race Analogy

**Strategy:** explore a value- and politically-neutral area.

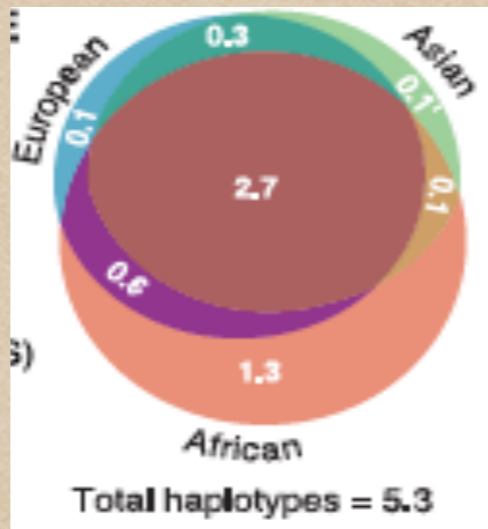
## **Analogous Similarities:**

- \* Methodological pluralism: varieties of models, criteria, and assumptions.
- \* Some “inherent-structurism” (Hacking 1999) in nature, as framed/measured by us.
- \* Many real classifications. Choice is optional and “conventional.”

# Methodological Pluralism

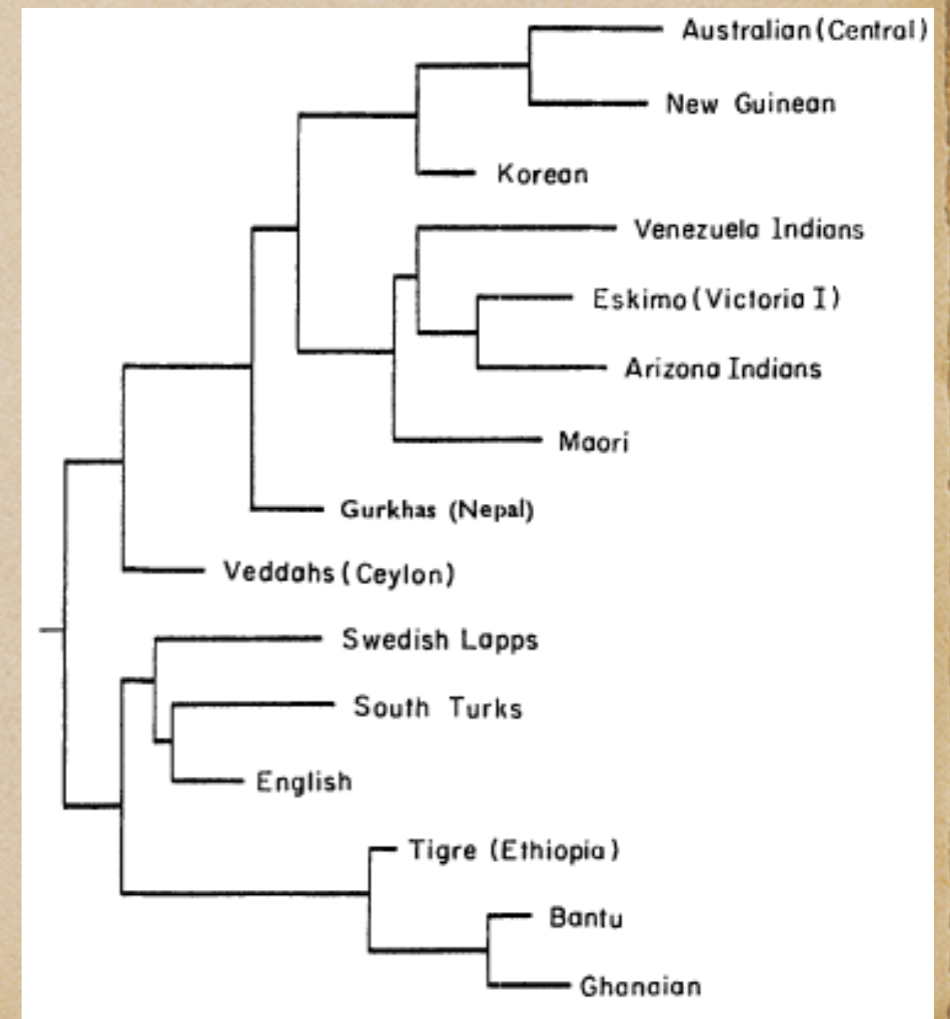


Rosenberg et al. (2005)



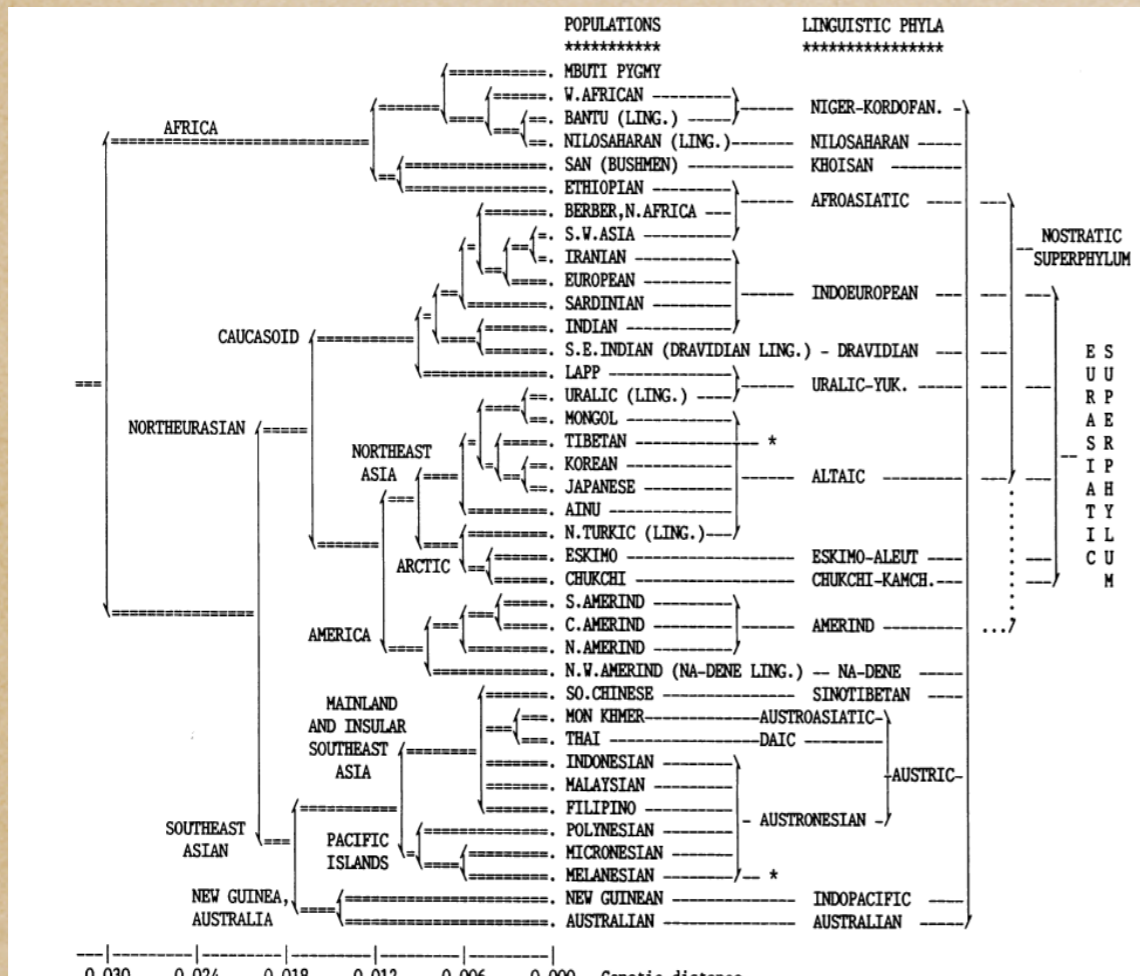
Gabriel et al. (2002)

Pluralism of models, criteria, and assumptions.

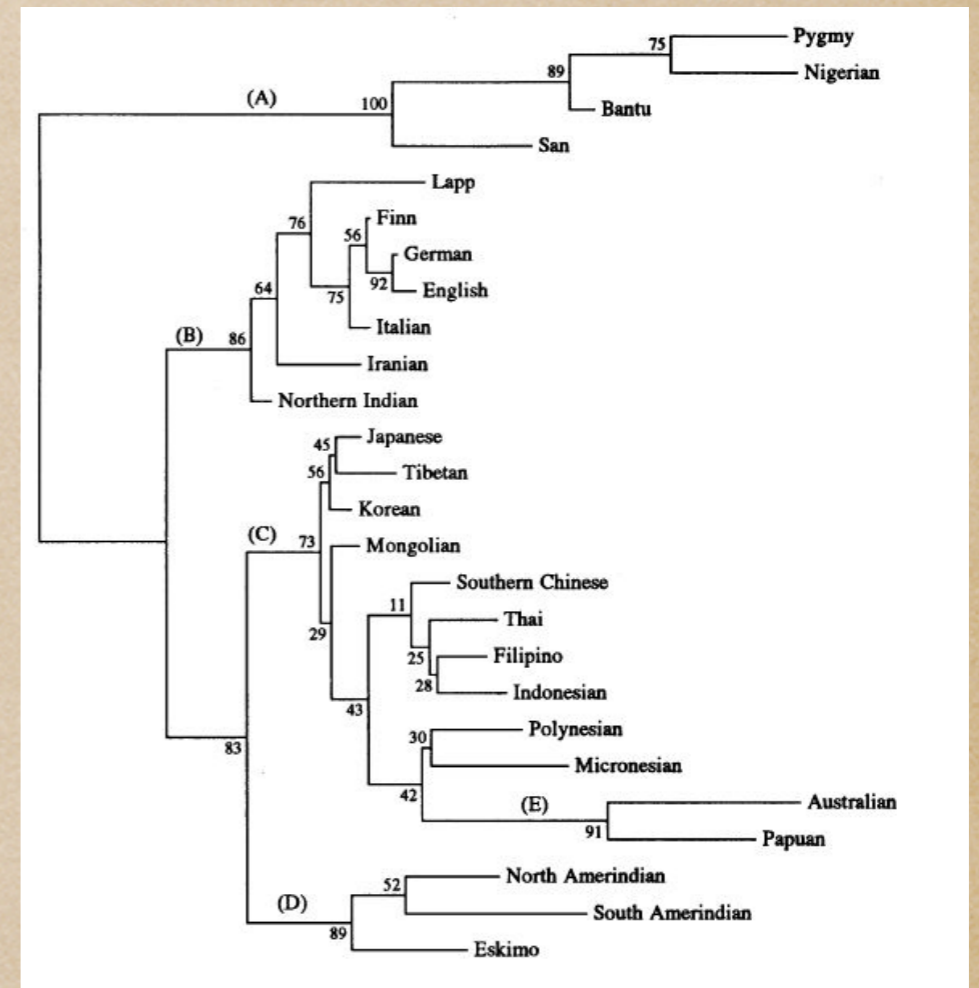


Cavalli-Sforza & Edwards. (1965)

# Alternative Classification



Cavalli-Sforza et al. 1988, 1994



Nei & Roychoudhury 1993

$$A(O(E(AsAm))) \neq A(E(Am(AsO)))$$

A = African; Am = Amerind; As = Asian; E = European; O = Oceanian

# Constellation-Race Analogy

## Objections

- \* 1. The Objective Galaxies Objection
- \* 2. The Objective Star Types Objection
- \* 3. The Totally Arbitrary Objection
- \* 4. The Irrelevancy Objection

# Conclusions

- \* Whence the Lewontin-Edwards discourse?  
Ontological and ethical lessons
- \* The uses (and abuses) of analogy in science and philosophy.
- \* Are races like constellations?

# Acknowledgements

- . IHR & Philosophy  
Department, UCSC
- . Ned Block
- . Doc Edge
- . Anthony Edwards
- . Ryan Giordano
- . Jonathan Kaplan
- . Richard C. Lewontin
- . Carlos López  
Beltrán
- . Sergio Martínez
- . Roberta Millstein
- . Mette Smølz Skau